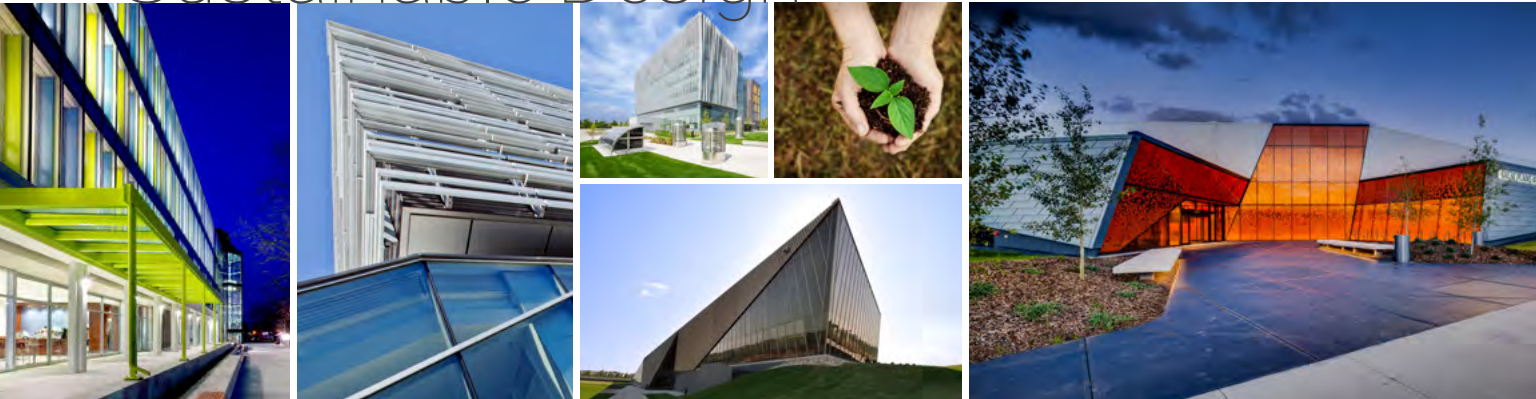




Engineers

Sustainable Design



Creative Thinking **Practical Results**



In a world of increasing challenges in the way Canadians live, work and play, RJC is a strong voice for creative and practical thinking through sustainable stewardship.

RJC Engineers

rjc.ca

Vancouver • Surrey • Victoria • Nanaimo • Kelowna • Calgary • Edmonton • Saskatoon • Toronto • Ottawa • Kitchener • Kingston • Montréal • Prince Edward Island

Creative Thinking **Practical Results**

Since 1948, **RJC Engineers** has been an innovative solutions provider that uses engineering knowledge and constructibility experience to capture our clients' vision and turn it into a reality. Our firm was founded on the principles of innovation, collaboration and engagement.

We constantly challenge ourselves by taking on projects that are unique and unconventional. We carefully consider each project, ensuring our designs are practical, sustainable and responsive to the ever-changing environment.

Ultimately, our goal is to design and restore buildings and structures that add vitality to streets, communities and city skylines.

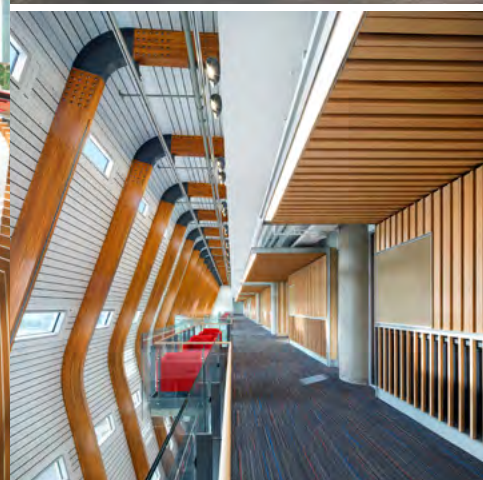
Service Offerings

Bridge Design and Rehabilitation
Building Enclosure Engineering
Condition Assessments
Depreciation Reports
Façade Engineering
Fall Protection/Travel Restraint
Heritage Conservation
Parking Facility Design
Pavement Rehabilitation
Performance Assessment

Post-Tensioned Concrete
Prime Consulting
Reserve Fund Studies
Roof Consulting
Seismic Risk Mitigation
Structural Engineering
Structural Glass Engineering
Structural Restoration
Sustainable Design
Waterproofing Design

RJC's areas of practice all contribute to developing the right plan of action for our clients.





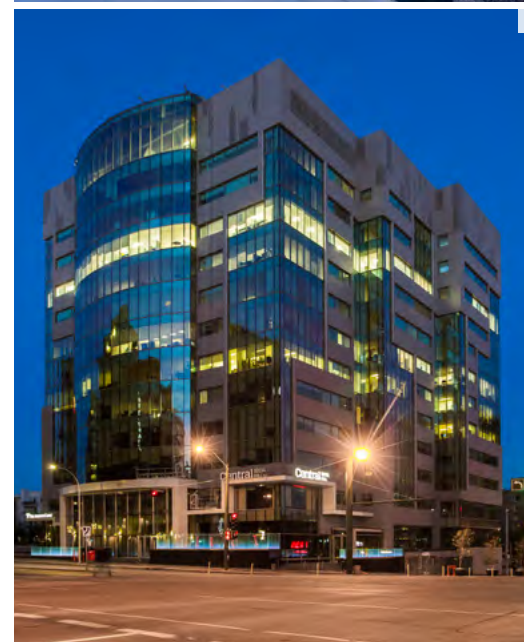
Sustainability

Good design is sustainable design

Since the emergence of the LEED® rating system in the late 1990s, green design has evolved into a broad-based search for harmony between nature and the built environment. Once regarded as atypical and avant-garde, sustainable design has quickly emerged as the norm in the industry and RJC takes great pride in our lead role.

Our insight into the ecological and communal impacts of sustainable design continuously evolve. Our passion around environmentally responsible design forces us to challenge norms regarding energy efficiencies and materials used on every one of our projects.

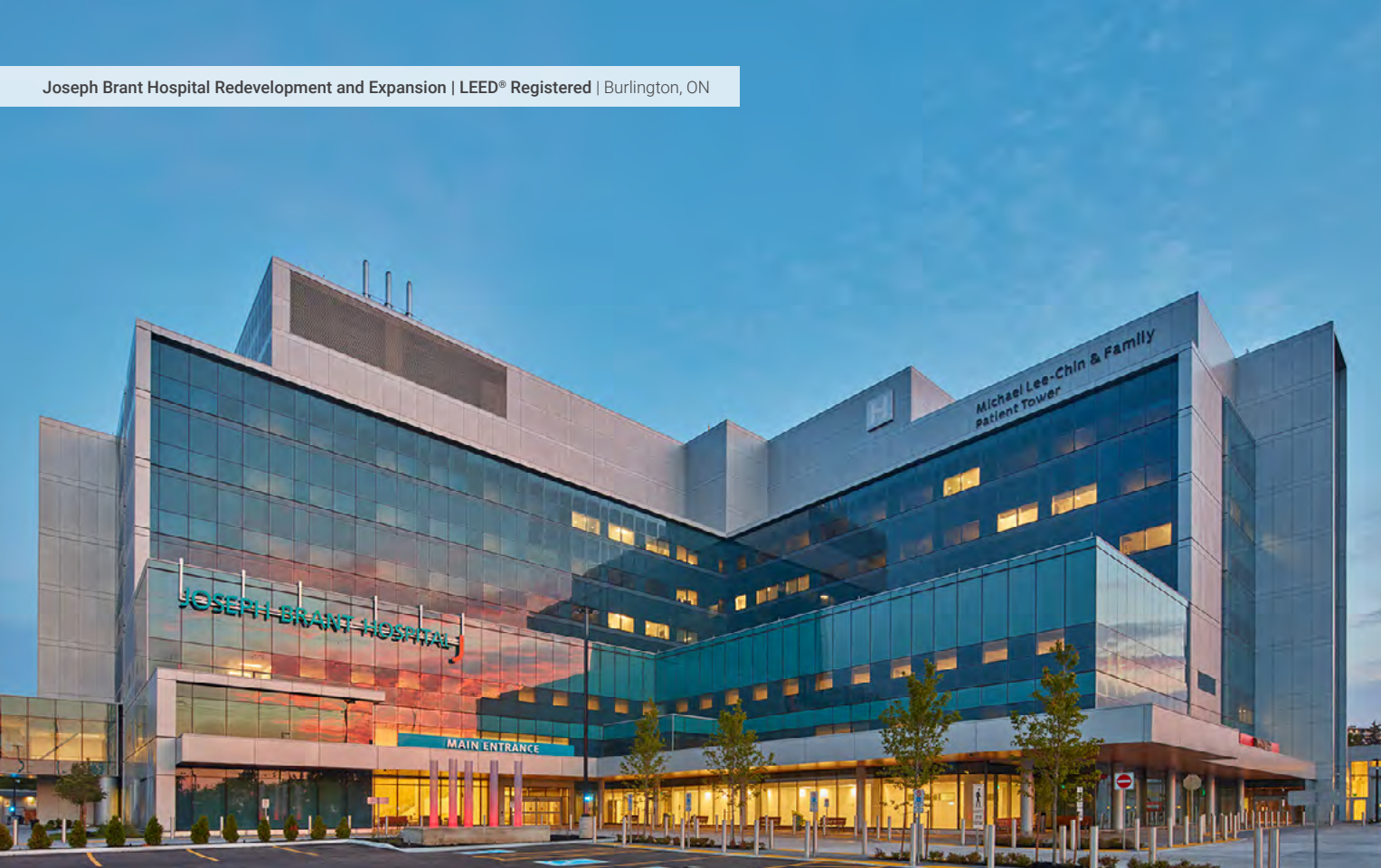
RJC is committed to delivering innovative solutions benefiting our clients, while also minimizing the economic, social and environmental impacts.



1. Calgary Zoo Penguin Plunge | LEED® Gold | Calgary, AB
2. Quinte Consolidated Courthouse | LEED® Silver | Toronto, ON
3. The Clive | LEED® Platinum | Victoria, BC
4. WSP Place | BOMA Certified | Edmonton, AB
5. Hillcrest Centre | LEED® Gold | Vancouver, BC
6. Guildford Town Centre Redevelopment | LEED® Gold | Vancouver, BC

As advocates for sustainable design, RJC's passion and commitment to responsive and responsible design is embedded into our everyday engineering practice.

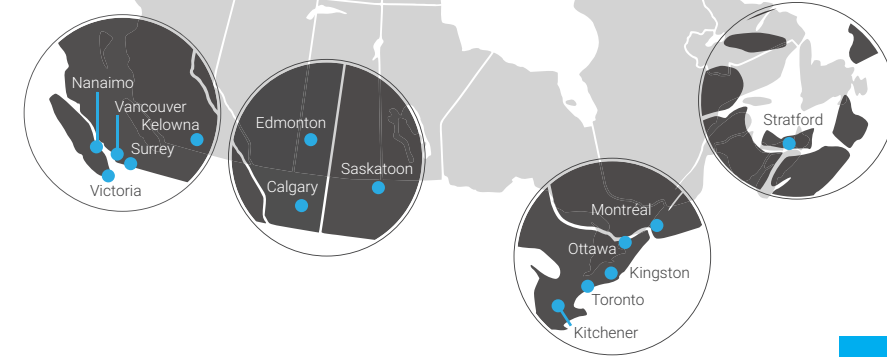




Our Bench Strength

Collaborative attitude, technical excellence

RJC Engineers is one of North America's leading engineering firms. With locations across Canada, we are able to provide sustainable design services for clients nationwide. Our numerous sustainability specialists have acquired knowledge and techniques through vast project work for our broad client base, including all levels of government, public and private sector, educational institutions, commercial developers and property managers.



Our Knowledge

Thoughtful and skillful design

With over 87 LEED Accredited Professionals and Green Associates, RJC continues to build upon their knowledge and understanding of green building strategies. We are proud of our emerging role as industry leaders in today's crucial environmentally responsible landscape.

Our sustainable design specialists are knowledgeable in all current sustainability standards in North America including:

- BOMA Best
- BREAM
- Built Green
- Green Globes
- Integrated Project Delivery (IPD)
- LEAN design and construction principles
- LEED®
- Living Building Challenge
- NetZeroEnergy
- Passive House
- Resilience
- Solar
- WELL Certification
- ZeroCarbon



Our Approach

Committed to environmentally responsive and holistic engineering

In today's built environment, being environmentally innovative and responsive is a defining component for how we measure success. Our core values infuse all that we do and our motivation is deeply rooted by our passion and commitment to delivering creative and practical design solutions for our clients, our communities and the environment. RJC is a strong voice for innovative thinking and sustainable leadership and as the importance of sustainability grows, we are leading the charge through research, design, and the full range of services we deliver. Our focus on the economical, social and environmental impacts of our projects, form the basis of how we work with our clients to meet their sustainability goals.





Interior Heart and Surgical Centre | LEED® Gold | Kelowna, BC



Our Methodology

Great buildings built to last

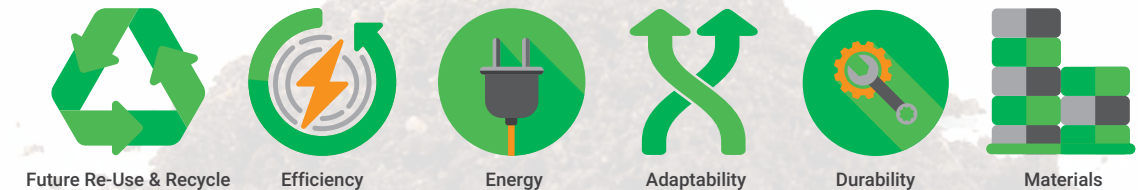
Your building can have a place in the future we envision — one where sustainable buildings are the rule, not the exception.

As part of our sustainable design process, we carefully consider impacts a building has on its surrounding physical environment, energy sources, performance and resiliency and the impacts on health and well being of its occupants. We also take great care in selecting appropriate resources to minimize the negative ecological impacts of our buildings by augmenting design efficiencies through the use of energy efficient materials.

We also provide durability consulting, including CSA S478 compliance and planning for service life and system renewals. We are members of both the US and Canadian Green Building Councils (USGBC and CaGBC), and are committed to advocacy and education to ensure a future where sustainable buildings are mainstream.

Our in-house Sustainability Framework and its six guiding design strategies, cross all green “accounting” systems and guide our designs and project team partners.

SUSTAINABLE DESIGN FRAMEWORK



EFFICIENT USE OF MATERIALS | DUALITY OF USE | DEMATERIALIZATION | THERMAL MASS | THERMAL BRIDGE
INCORPORATE RECYCLED MATERIALS | MATERIAL COMPARISON INCORPORATE RE-USED MATERIALS

Our Involvement

Fostering sustainability through partnerships

A culture of “giving back” has been a core value of RJC since our inception and aligns well with our sustainable vision. As a firm we realize that our impact extends well beyond our projects. With this in mind, RJC actively supports through sponsorships and donations many Canadian Green Building Council (CaGBC) national and local chapter events and programs.



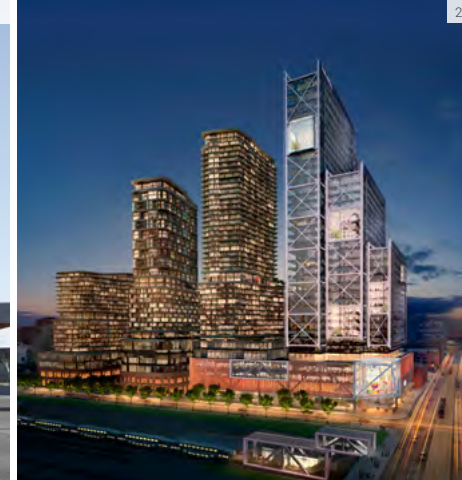
980 Howe Street | LEED® Gold | Vancouver, BC



U of T Scarborough Environmental Science and Chemistry Building | LEED® Gold | Scarborough, ON
Canadian Green Building Award | Institutional Large | 2019



Okanagan College Trades Complex | LEED® Platinum | Kelowna, BC
Canadian Green Building Award | Institutional Large | 2019



1. Clareview Recreation Centre | LEED® Silver | Edmonton, AB
2. The Well | LEED® Platinum | Toronto, ON
3. The Exchange | LEED® Platinum | Vancouver, BC
4. Nanaimo Regional General Hospital | LEED® Gold | Nanaimo, BC
5. Uptown Shopping Centre | LEED® Gold | Victoria, BC

We Think Green

Innovative action and ideas

RJC's **Sustainable Design Group** (SDG) acts as a core for staying abreast of industry techniques and practices that expand RJC's knowledge of sustainable design on a broad spectrum of understanding, in particular, on how it affects our core practice areas, particularly structural design and Building Science. The SDG establishes best practices in sustainability across our practice areas and recommends the adoption of these standards firm wide and supports these practices through research. The group helps foster innovation related to sustainable design practices so that RJC is viewed as an industry leader in sustainable design practices.

The 'green' initiatives we implement and the investments we make in our firm, are guided by our core values. At RJC, we strive to conduct ourselves in a manner that consistently reinforces and leverages our values of being responsive, creative and practical.

RJC is on a journey towards greener operations and as we migrate to a reduced environmental footprint, our staff has collaborated to create our Green Operations Plan. It outlines our vision and policies and, as a "living document," is updated regularly with progress on initiatives and strategies.

We have also established GreenTeams within each of our offices. These teams actively pursue ways to bring our Green Operations Plan vision to life, including cultivating recycling programs, developing sustainable procurement processes, reducing energy use and generating new ideas to reduce our environmental footprint. RJC's leadership recognizes the importance of providing opportunities for input and feedback, and they actively support and encourage staff to engage with RJC GreenTeams with **creative thinking** and **practical results**.





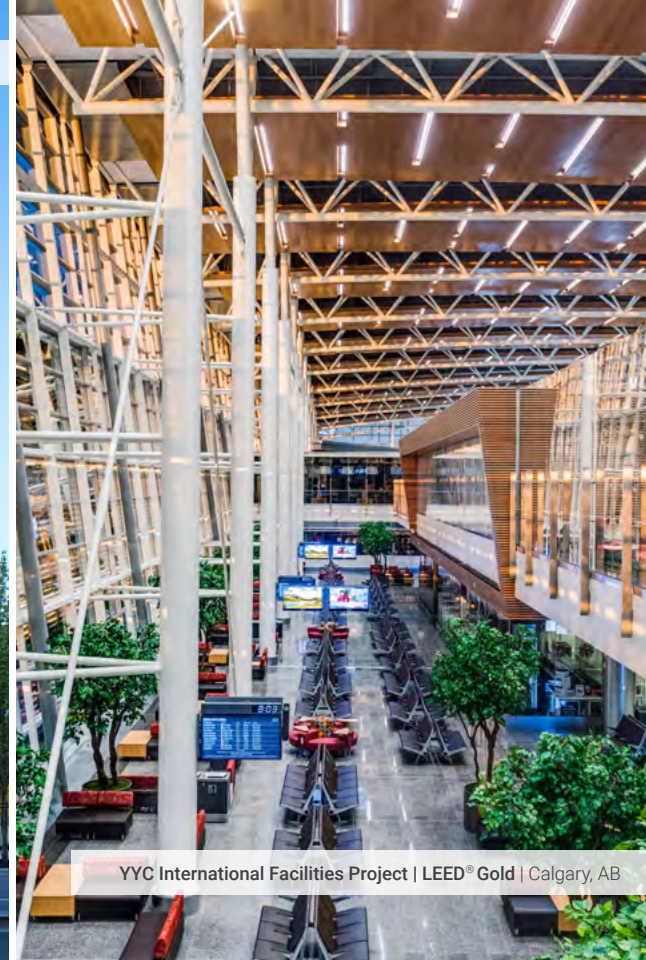
Centennial Place | LEED® Platinum | Calgary, AB



Eighth Avenue Place | LEED® Platinum | Calgary, AB



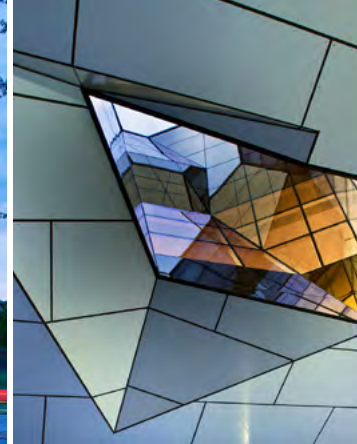
Surrey Civic Centre | LEED® Gold | Surrey, BC



YYC International Facilities Project | LEED® Gold | Calgary, AB

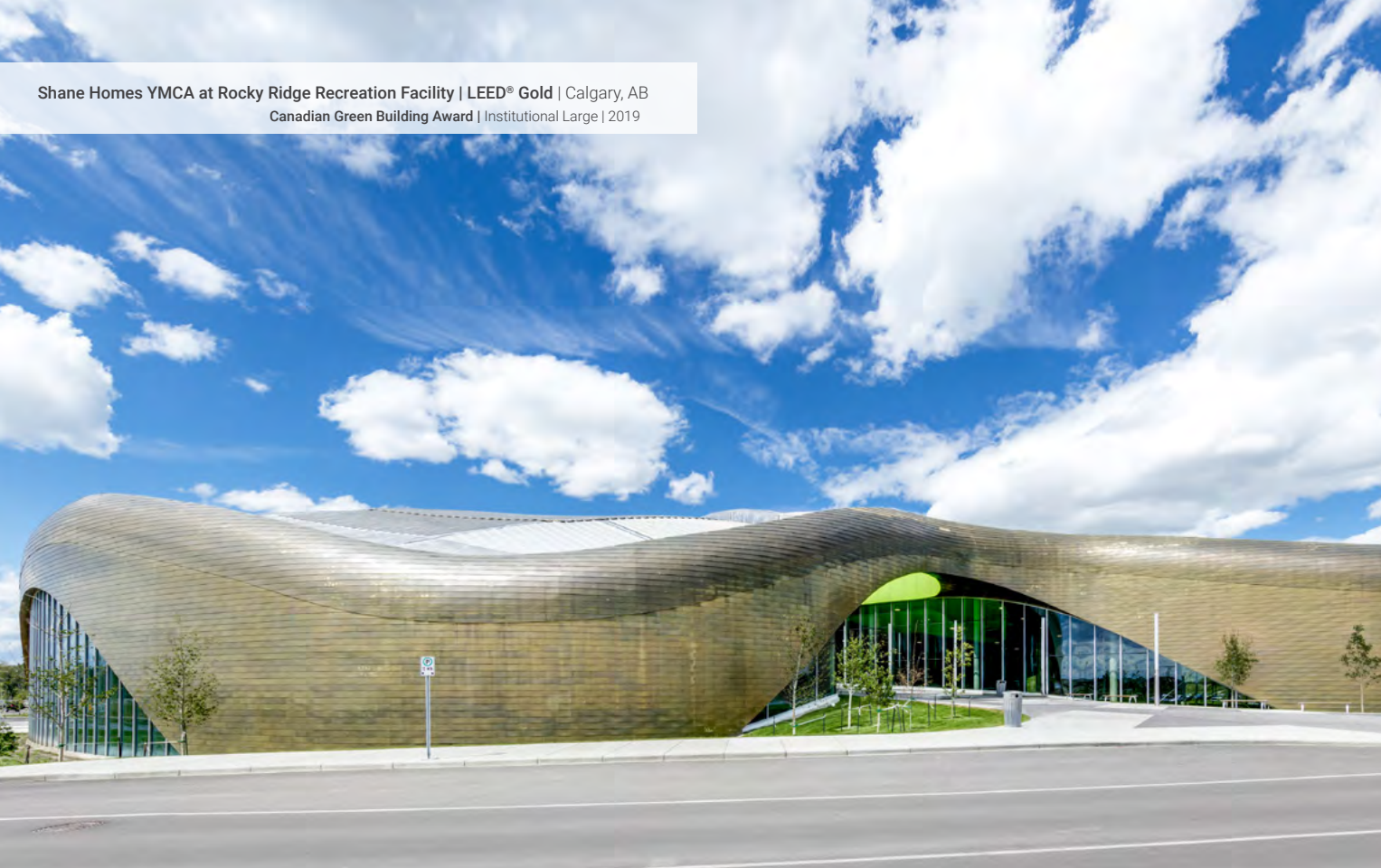
NAIT Centre for Applied Technologies | LEED® Gold | Edmonton, AB





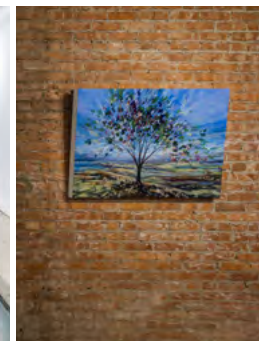
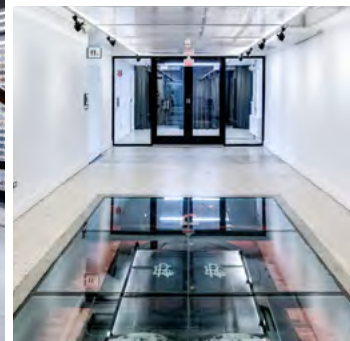
Langara College Science and Technology Building | LEED® Gold | Vancouver, BC
Canadian Green Building Award | Institutional Large | 2018

Shane Homes YMCA at Rocky Ridge Recreation Facility | LEED® Gold | Calgary, AB
Canadian Green Building Award | Institutional Large | 2019



1. BCIT SW1 Gateway | LEED® Gold | Vancouver, BC
2. Camas Gardens | LEED® Gold | Victoria, BC
3. Camosun College Pacific Institute for Sports Excellence | LEED® Gold | Victoria, BC





cSpace King Edward Arts Hub | LEED® Registered | Calgary, AB



1. Bow Valley College Expansion Phase 1 | LEED® Silver | Calgary, AB
2. 1515 Douglas Street Phase 1 | LEED® Platinum | Victoria, BC
3. Vaughan Metro Centre KPMG Tower | LEED® Gold | Vaughan, ON
4. Kettle on Burrard | LEED® Gold | Vancouver, BC

Camosun College Centre for Trades Education and Innovation | LEED® Gold | Victoria, BC



1. MRU Riddell Library and Learning Centre | LEED® Gold | Calgary, AB
2. Banff Kinnear Centre for Creativity and Innovation | LEED® Gold | Banff, AB
3. BCIT SW1 Gateway | LEED® Gold | Vancouver, BC
4. Chilliwack Secondary School | LEED® Gold | Chilliwack, BC
5. Heritage Valley Fire Station | LEED® Silver | Edmonton, AB



1. Dockside Green | LEED® Platinum | Victoria, BC
2. University of Calgary EEEL | LEED® Platinum | Calgary, AB
3. CANMET Materials Technology Laboratory | LEED® Platinum | Hamilton, ON
4. Nanaimo Regional General Hospital | LEED® Gold | Nanaimo, BC



Departure Bay Terminal | LEED® Silver | Nanaimo, BC

Our Sustainability Specialists

British Columbia

Terry Bergen

CTech, CCCA, LEED® AP
T. 778.746.1147 E. tbergen@rjc.ca

Chris Jacques

BESc, P.Eng., Struct.Eng., LEED® AP, MStructE
T. 778.728.0406 E. cjacques@rjc.ca

Leslie Peer

PhD, P.Eng., FEC, RRC, LEED® AP O&M
T. 778.738.1746 E. lpeer@rjc.ca

Michael Blackman

P.Eng., FEC, LEED® AP
T. 778.738.1701 E. mblackman@rjc.ca

Alberta

Jeff Rabonivitch

MSc, P.Eng., LEED® AP BD+C
T. 587.745.0267 E. jrabinovitch@rjc.ca

Stacey McDougall

CET, LEED® AP BD+C
T. 403.338.5853 E. smcdougall@rjc.ca

Ontario

Duncan Rowe

BASc, MEng, P.Eng., LEED® AP BD+C
T. 647.792.0736 E. drowe@rjc.ca

Ralf Altenkirch

MEng, P.Eng., LEED® AP
T. 416. 639.1603 E. raltenkirch@rjc.ca

thinkgreen@rjc.ca



Great Plains Recreation Facility | LEED® Gold | Calgary, AB



Clayton Community Centre | Surrey, BC

Contact Us

Click [here](#) for our locations.

Front Cover: Left to Right

UBC Sauder School of Business | LEED® Silver, Langara Science and Technology Building | LEED® Gold, UoT Scarborough Environmental Science and Chemistry Building | LEED® Gold, Clareview Recreation Centre | LEED® Silver, Great Plains Recreation Centre | LEED® Registered

Back Cover: Left to Right

Shane Homes YMCA at Rocky Ridge | LEED® Gold, Guildford Town Centre Redevelopment | LEED® Gold, "Kettle" on Burrard | LEED® Gold, CANMET Materials Technology Laboratory | LEED® Platinum, Immigrant Services Society of BC | LEED® Gold



Creative Thinking **Practical Results**

RJC Engineers
rjc.ca

